

Sixteenth in a Series

Collection for a Cause
Mill Book Series
Circa 1892
Howard Marcus
moda

moda **KIT**

The latest collection in the Collection for a Cause Series from Moda reproduces fabrics from a circa 1892 French mill book. The mill book contains hundreds of antique swatches documenting prints of the time. Authentic in color and in scale, this beautiful collection showcases the fine, delicate print quality of the period. The 1892 mill book is part of the Howard Marcus Collection.

Moda's owner and founder, Howard Marcus Dunn, continues to share his passion for giving by donating proceeds from his Collections for a Cause fabrics to various charities and causes.



KIT46200 / PS46200 Collection Mill Book 1892 Size: 70" x 70"

Supporting the Cause...

TEXAS QUILT MUSEUM

History in the Making

www.texasquiltmuseum.org

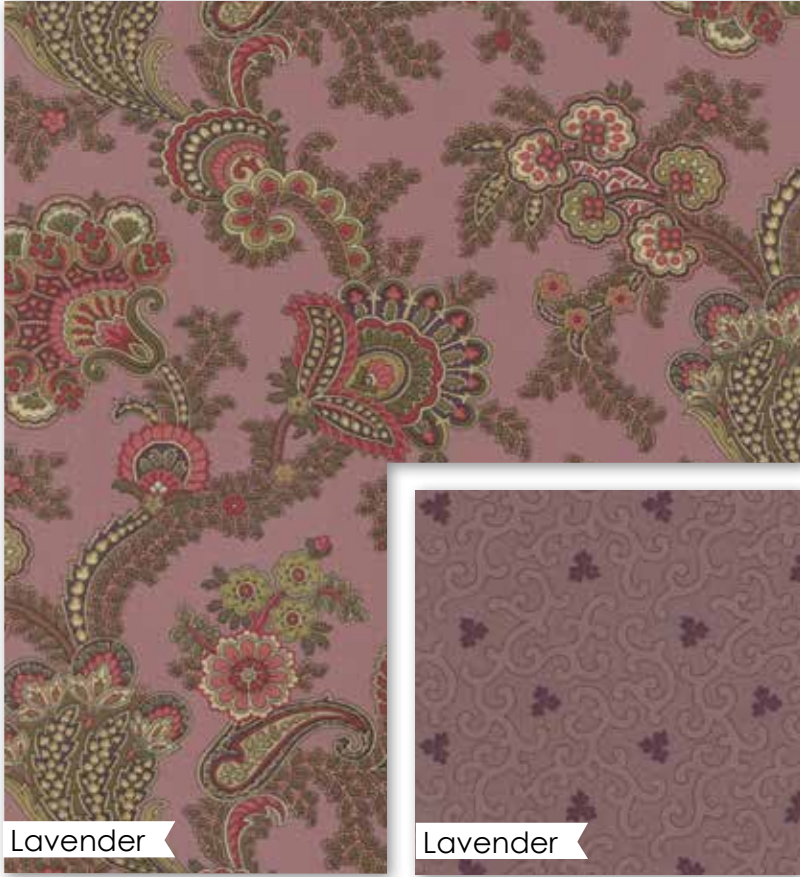
Located in LaGrange, a small town in the rolling hills of Central Texas, the Texas Quilt Museum was opened in November, 2011. With three galleries to feature both antique and contemporary quilts the museum continues to share its mission to recognize and celebrate the art and beauty of quilts, the creativity of their makers, and the continuing contributions of quilt making to history and culture.





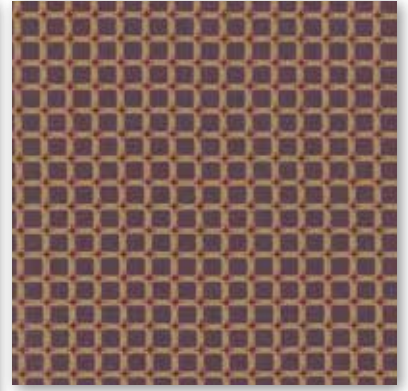
Purple

46203 12



Lavender

46200 12*



46208 13



Lavender

46202 13*



Purple

46205 12



Purple

46204 11



Purple

46207 13*



Purple

46201 11*



Purple

46206 11*



Purple

46171 36



Purple

46200 11*

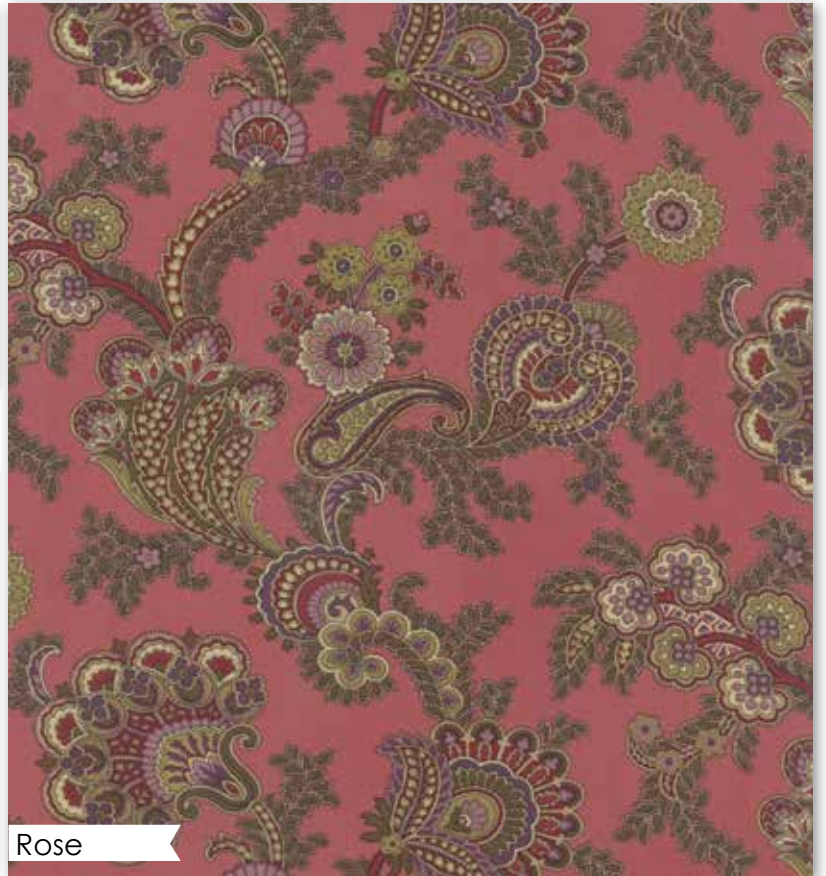


Rose

46205 18*

Parchment

46200 18



Rose

46200 14



Inspiration Quilt



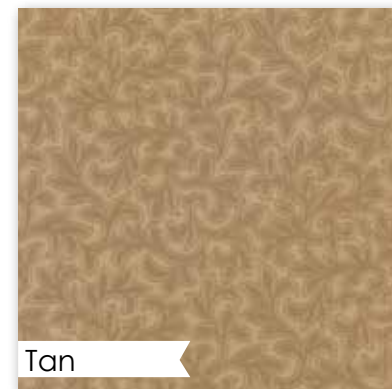
Parchment

46202 21



Parchment

46203 22



Tan

46205 24*



Tan

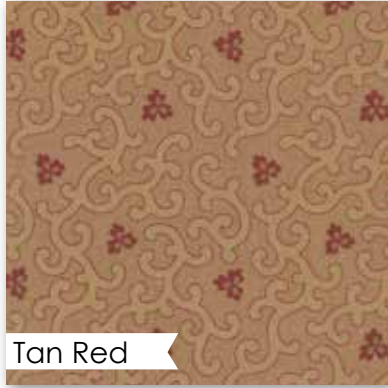
46207 21*

This 1890 quilt, *Baskets and Stars*-from the Texas Quilt Museum's collection, was the inspiration for the Collection Mill Book Circa 1892 quilt. We fell in love with the baskets, but changed the unusual 7 point star to a Lone Star to give our quilt that Texas flair!



Tan

46171 42



Tan Red

46202 20



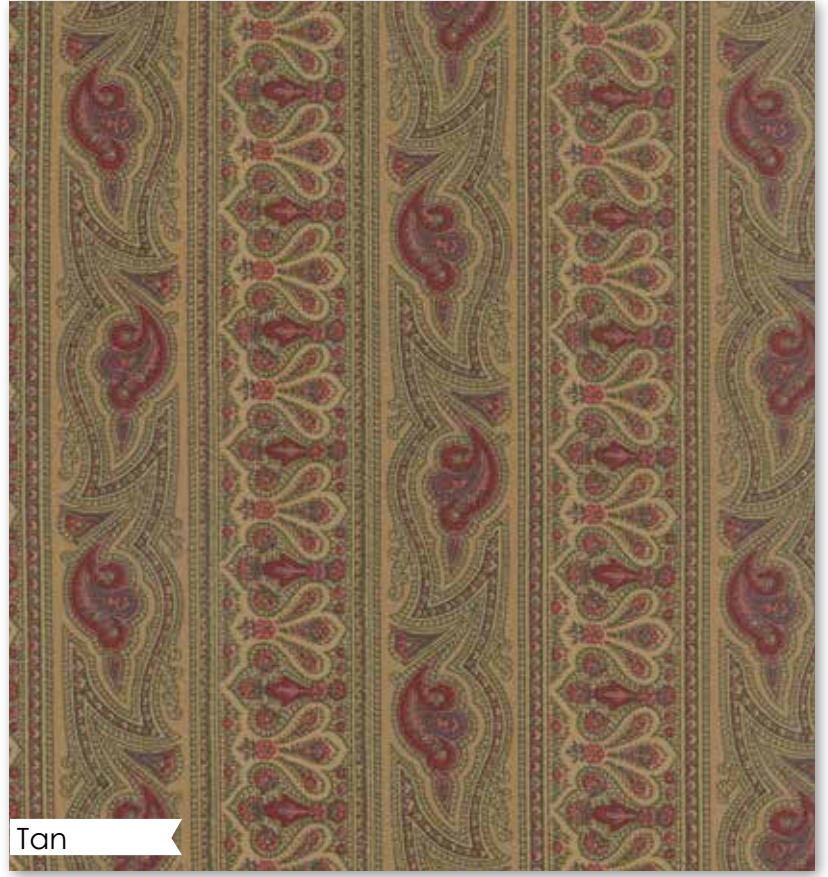
Tan

46206 18



Tan

46204 17*



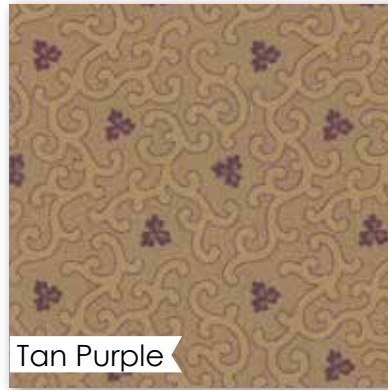
Tan

46201 17*



Parchment

46204 18



Tan Purple

46202 19



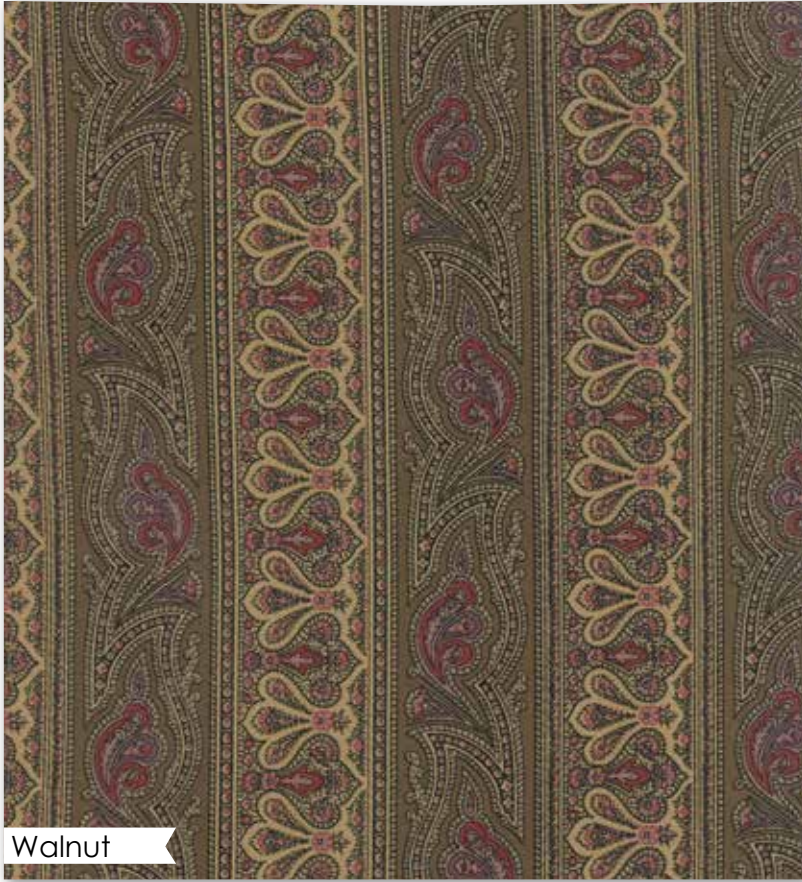
Olive

46203 18*



Tan

46200 17*



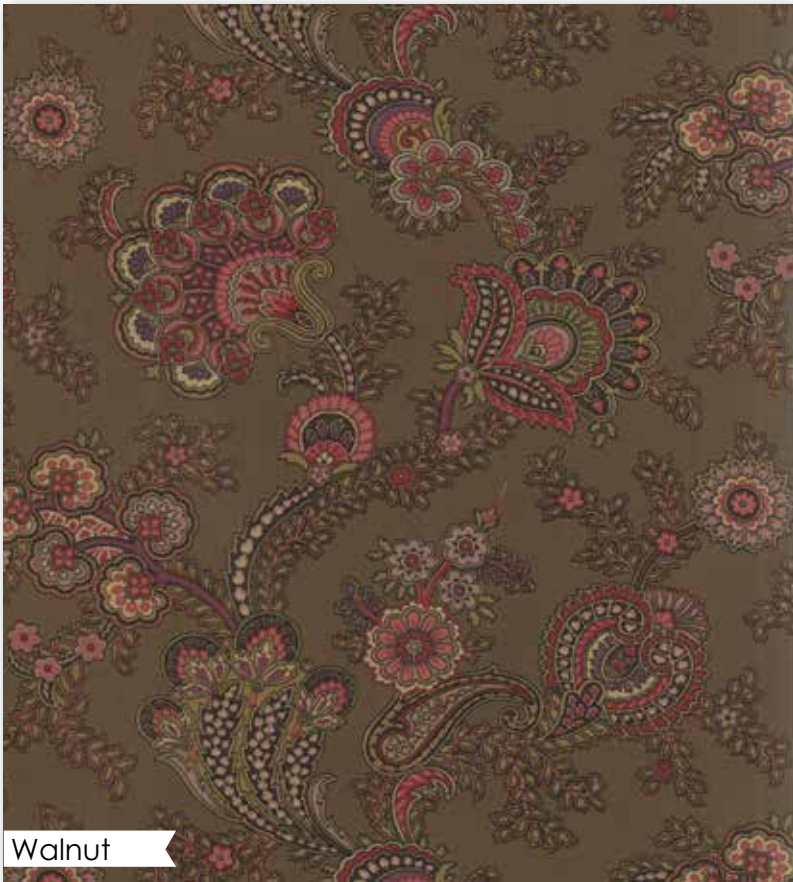
Walnut

46201 15



Walnut

46204 15*



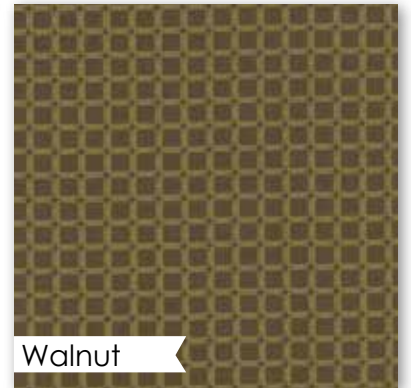
Walnut

46200 15



Walnut

46171 40



Walnut

46208 20



Walnut

46207 19*

moda **KIT**



Red

46200 13*



Red

46205 16



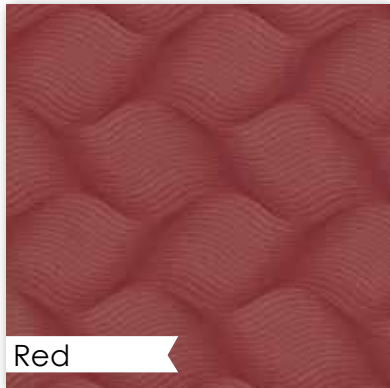
Red

46206 13*



Red

46201 13*



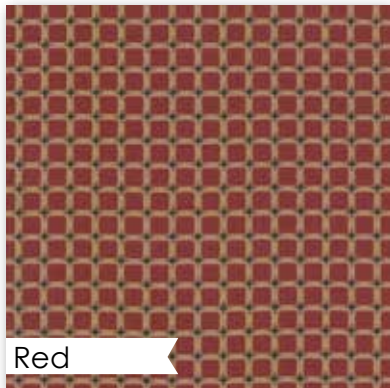
Red

46207 17*



Red

46171 38



Red

46208 16*



KIT46201 / KIT46201G
Collection Mill Book1892 Table Runner
Size: 20" x 55"

46200

Asst. 15

Asst. 10

Low Cal 10

AB

F8

JR

LC

MC

PP

PS

KIT

• 100% Premium Cotton

• 40 Prints

Delivery: April, 2015