

Special note: The four blocks in the last row of the quilt are two-thirds of a full block and will measure only 9" x 18".
 A one-third size block diagram is provided for the color arrangement and the numbers 1, 2, 3, and 4 indicate the pattern parts used.

Gorgeous fabrics!



modafabrics.com



YARDS	DECIMAL	INCHES	October Delivery	DE
1/16	.0625	2 1/4"	9/16	.50
1/8	.125	4 1/2"	5/8	.62
3/16			11/16	
1/4				
5/16				
3/8				
7/16	.4375	15 3/4"	15/16	.93
1/2	.5	18"	1	1.00

YARDAGE CHART
 (Material 45" wide)

LE MARAIS

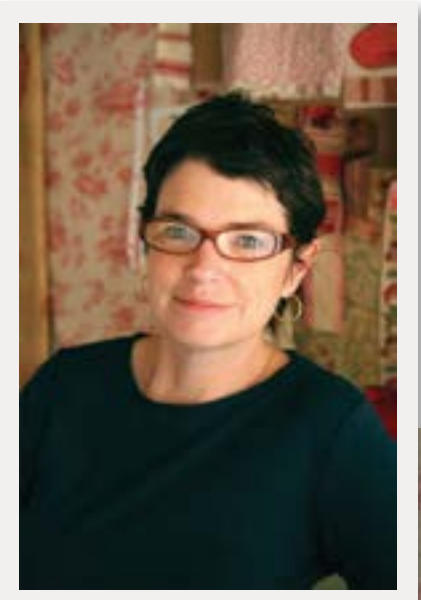


Collecting antique textiles in France has long been a passion of Kaari Meng, owner of French General. French General is a workshop located in Los Angeles, California that stocks a collection of vintage craft kits, as well as fabric and old millinery supplies. The fabric collections represent colors that could have been found in 18th century rural homes in France. Different textures and prints are meant to blend together for projects that are both beautiful and functional. Filled with soft faded reds, ticking stripes and provencal checks, the fabrics are made to be used for heirloom quilts as well as home interiors.

French General is a workshop located in Los Angeles, California and is open to the public for shopping and creative classes. Teachers from around the world come to French General to teach their craft and inspire students on a weekly basis. For more information about our retail hours and workshop schedule, please visit www.frenchgeneral.com

French General has written over five books, including jewelry making, home decor, entertaining and crafts – each layered with the warmth, color and texture that French General has become known for. As well as writing books, Kaari teaches a variety of creative and inspiring workshops across the country on a regular basis.

French General also takes women to the South of France every summer to help them find their inner French woman. The creative retreats include flea markets and farmer markets, exploring local villages, and meeting artisans that still make things the way they were made 100 years ago. Each week is filled with workshops that use materials found in the flea markets as well as teach techniques in sewing, stitching, natural dyeing, paper crafts and mixed media. For more information or to sign up for one of the weeks in France, please write to French General at notions@frenchgeneral.com



patterns by French General



FG LM05 / FG LM05G
 Le Marais Sewing Box
 10.5" x 8" x 3.5"

FG LM01 / FG LM01G Le Marais Size: 55" x 59"

FG LM04 / FG LM04G Rue St. Paul Size: 57" x 57"

FG LM03 / FG LM03G Places des Voges
 Size: 72.25" x 72.25"

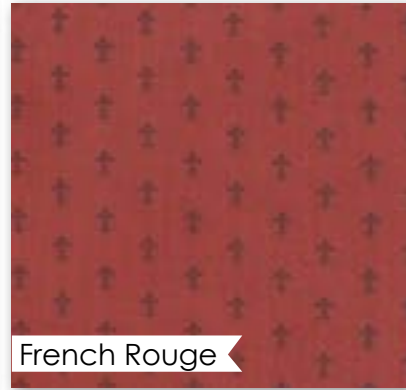
FG LM02 / FG LM02G Jardin de Rosiers
 Size: 57" x 57"





French Rouge

13731 11 *
reduced to show repeat



French Rouge

13736 11



French Rouge

13733 11 *



French Rouge Pearl

13730 16 *



Pearl

13732 16 *



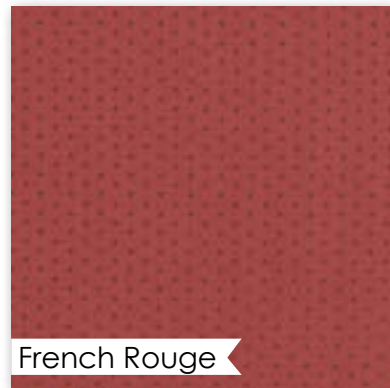
French Rouge

13547 21 *



French Rouge

13529 141



French Rouge

13734 11



French Rouge

13550 21 *



French Rouge

13732 11



Pearl

13733 15 *



Pearl

13735 15



Pearl

13734 15 *



Pearl

13529 21LM



Pearl

13550 24 *

So stashable!
Add to FG reds!

Stock up for
beautiful backgrounds!



Old Brown

13550 25 *



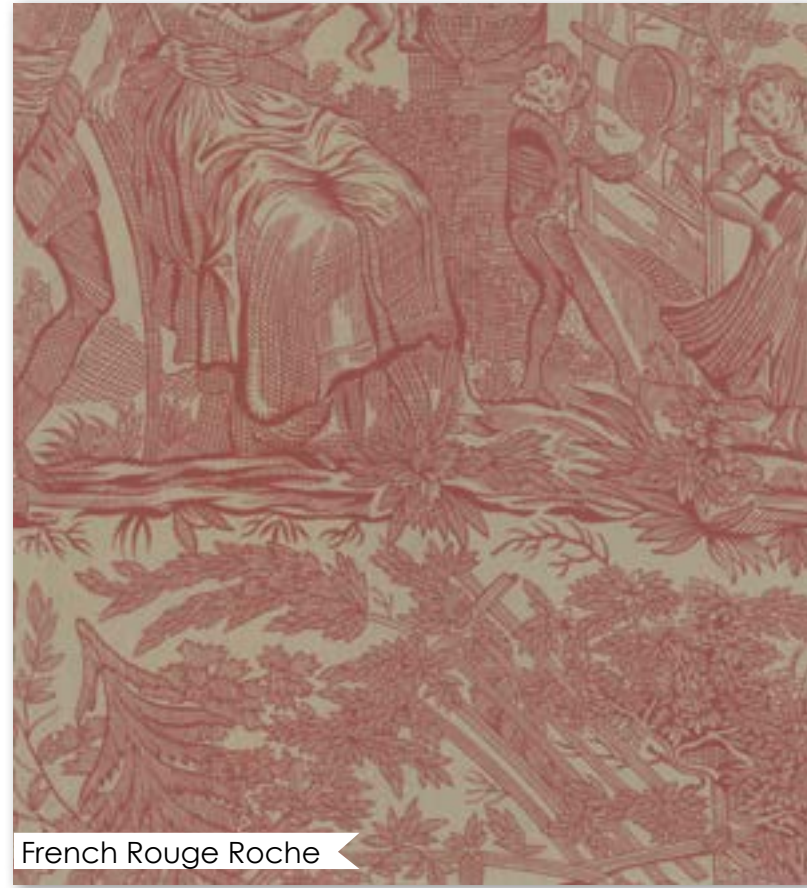
Old Brown

13735 17



Old Brown

13734 18 *



French Rouge Roche

13730 14



Roche

13550 23 *



Old Brown

13547 25



Roche

13733 14 *



Old Brown

13529 55LM



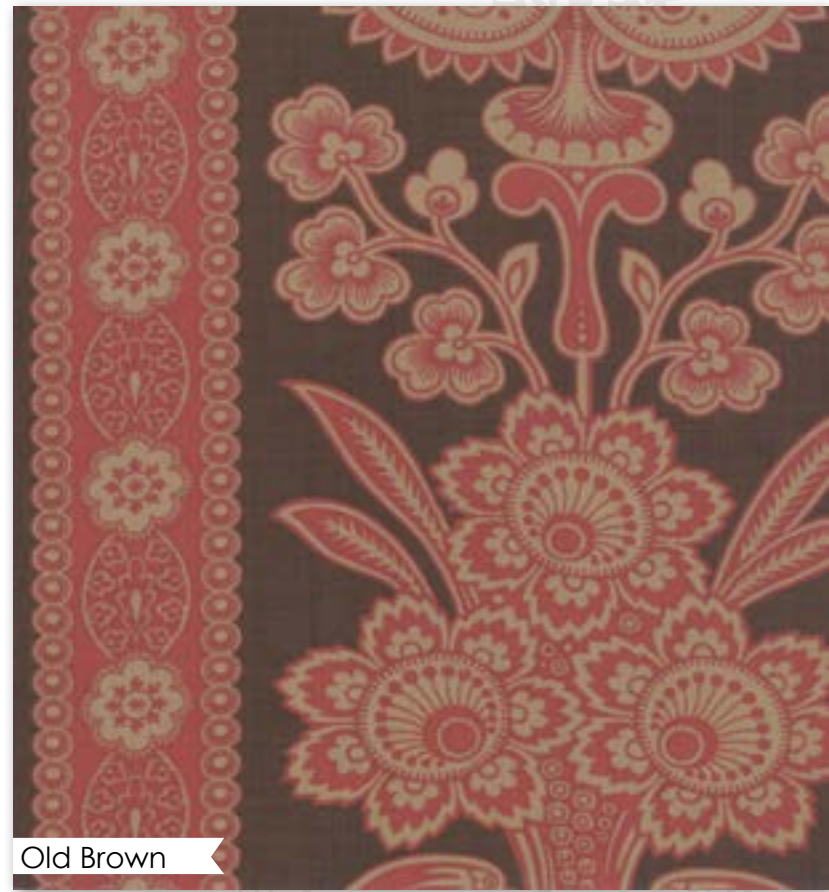
Roche

13736 13



Roche

13529 20LM



Old Brown

13731 17 *



Old Brown Pearl

13730 18



Old Brown Roche

13730 15 *



Roche

13735 13 *



Roche

13731 14

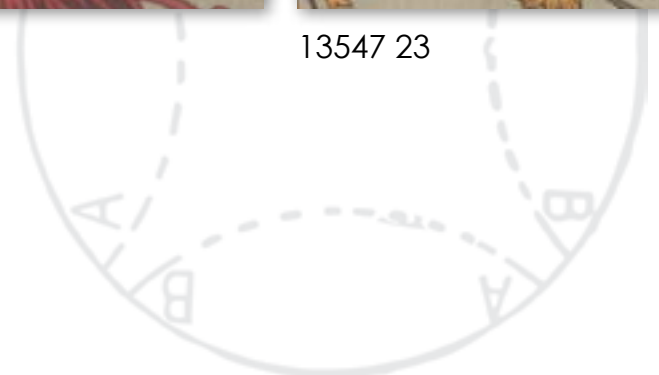


Roche

13547 23

3. Move the "B" so that a "B" falls on an "A" point of the first circle, and so that the "A" connected with this "B", by a dotted line on the marker, falls on the same circle.

4. Outline the circle as before, again marking the "A" points. The same operation is repeated over the entire block, being careful not to place the "B" on an "A" point already crossed by two circles. All the circles interlock into one of the most popular and attractive quilting designs.



Linens

30% linen 70% cotton



Woad Blue

13731 12



Woad Blue

13547 22 *



Woad Blue

13550 22



Woad Blue

13732 13 *



French Rouge Pearl

13730 16L



Old Brown Roche

13730 15L



Woad Blue Pearl

13730 17L



Woad Blue Pearl

13730 17 *



Woad Blue

13529 33LM



Woad Blue

13736 12 *



Pearl

13735 15L



Roche

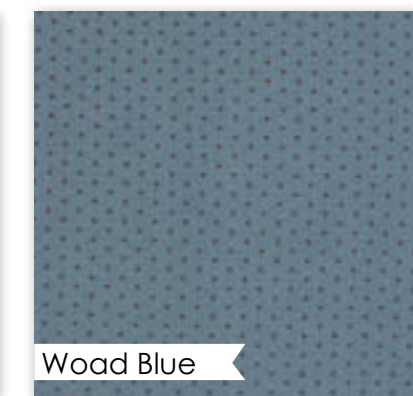
13735 13L

Great fabrics for home dec projects, apparel and totes!



Woad Blue

13733 12



Woad Blue

13734 12



French Rouge

13529 141L



Woad Blue

13529 33L



Roche

13529 20LML



Pearl

13529 21LML