

# ALPINE

by Erin Michael



## Quilt Pattern

No RQC 134 / RQC 134G  
Silverton  
Size: 72" x 75"  
F8 Friendly



MAY  
2016  
DELIVERY

"The mountains are calling and I must go." - John Muir, 1873

Like John, there are times in life when you are just called to do something or go someplace. Having lived in Colorado for many years, I am sometimes "called back" to the mountains as well and this collection is inspired by that time; as well as by John Muir's dedication to preserving our wilderness areas and becoming the "Father of our National Park system". I hope you find something in life that calls you.

[modafabrics.com](http://modafabrics.com)

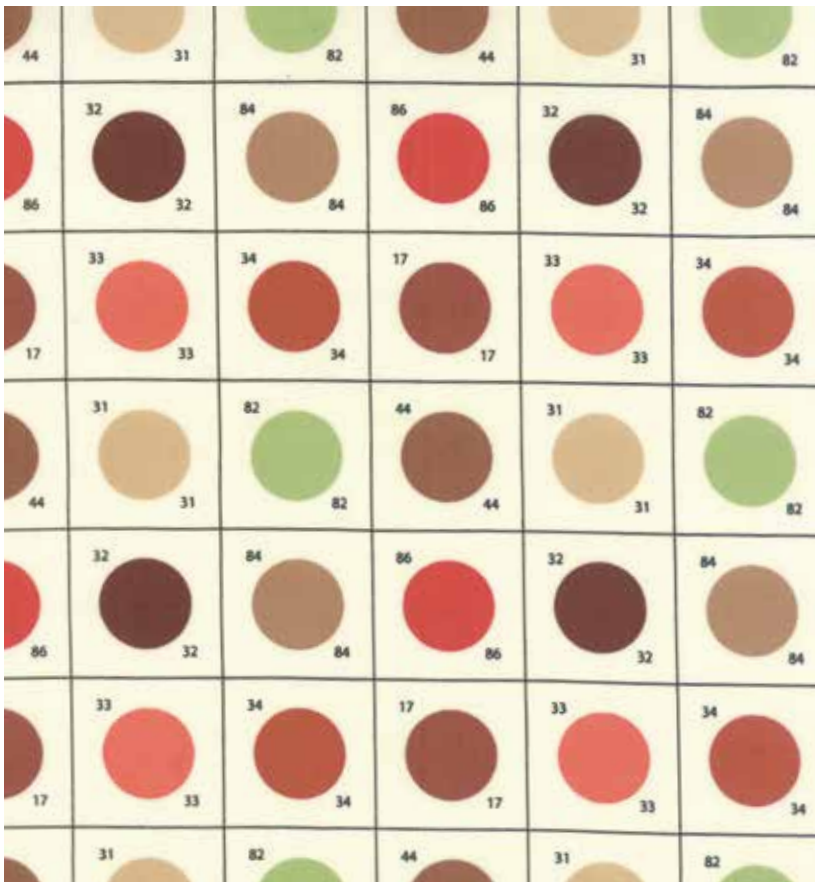


moda





№ 26045 32  
Earth



№ 26095 17\*  
Earth



№ 26102 15\*  
Rust



№ 26103 17  
Rust



# Grandma Dunn's Brownies

FROM: ERIN LAWLER

## INGREDIENTS:

1 STICK UNSALTED BUTTER

2 OZ UNSWEET BAKING CHOCOLATE

2 EGGS

1 CUP SUGAR

1/2 CUP FLOUR

1 TSP VANILLA EXTRACT

PINCH OF SALT

POWDERED SUGAR

MELT BUTTER AND CHOCOLATE IN A PAN ON

LOW HEAT. IN A MEDIUM BOWL BEAT EGGS WITH

SUGAR, ADD A PINCH OF SALT. COMBINE MELTED

CHOCOLATE WITH EGGS THEN ADD FLOUR AND

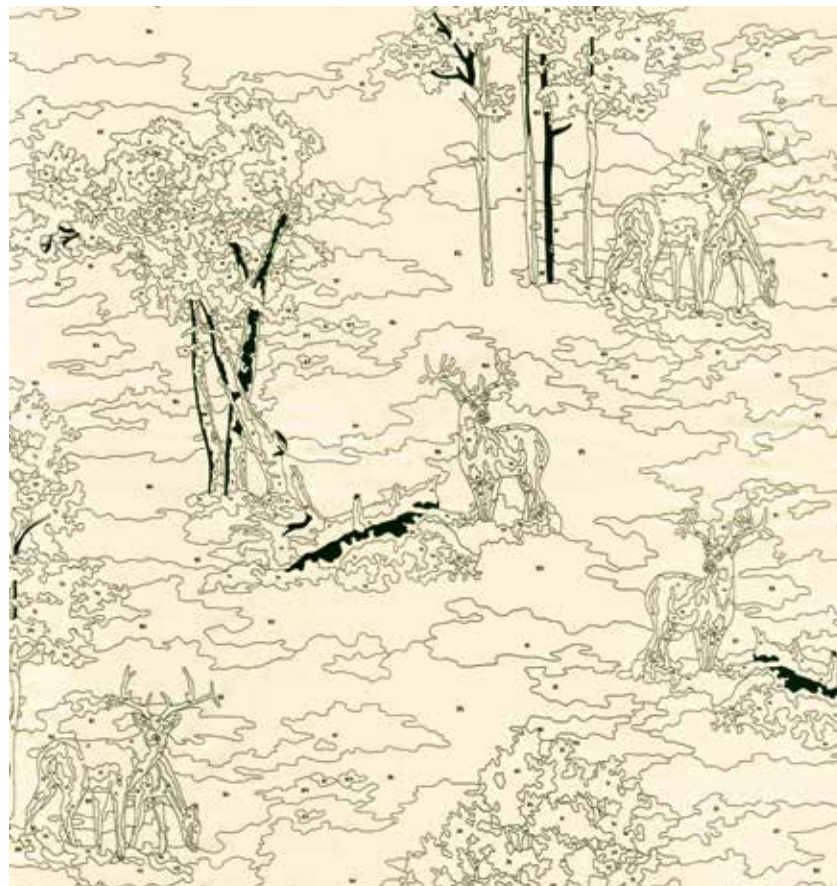
VANILLA. POUR MIXTURE INTO A GREASED (WITH

BUTTER) GLASS, SQUARE BAKING DISH. BAKE 20

MINUTES AT 350 DEGREES. ONCE COOLED, SIFT

POWDERED SUGAR ON TOP, CUT INTO SQUARES

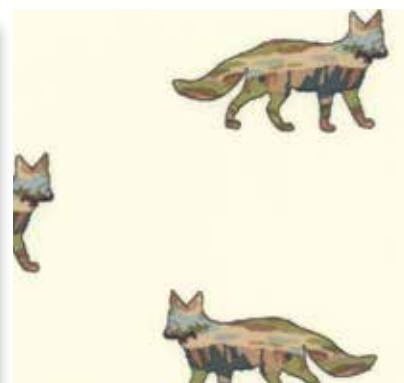
AND ENJOY!



No 26045 31  
Birch White



No 26106 11\*  
Birch White



No 26103 11  
Birch White



No 26101 21  
Birch White



No 26102 12\*  
Birch White

the  
**Cookie**  
exchange

RECIPES FROM YOUR FAVORITE MODA DESIGNERS

93

moda

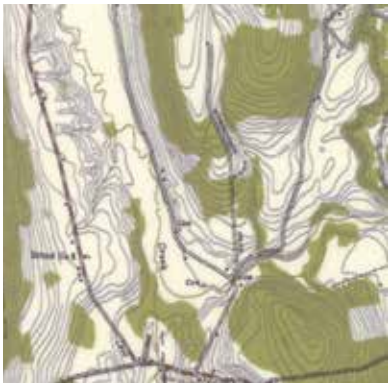


modafabrics.com

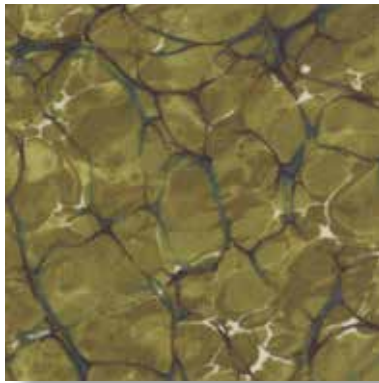




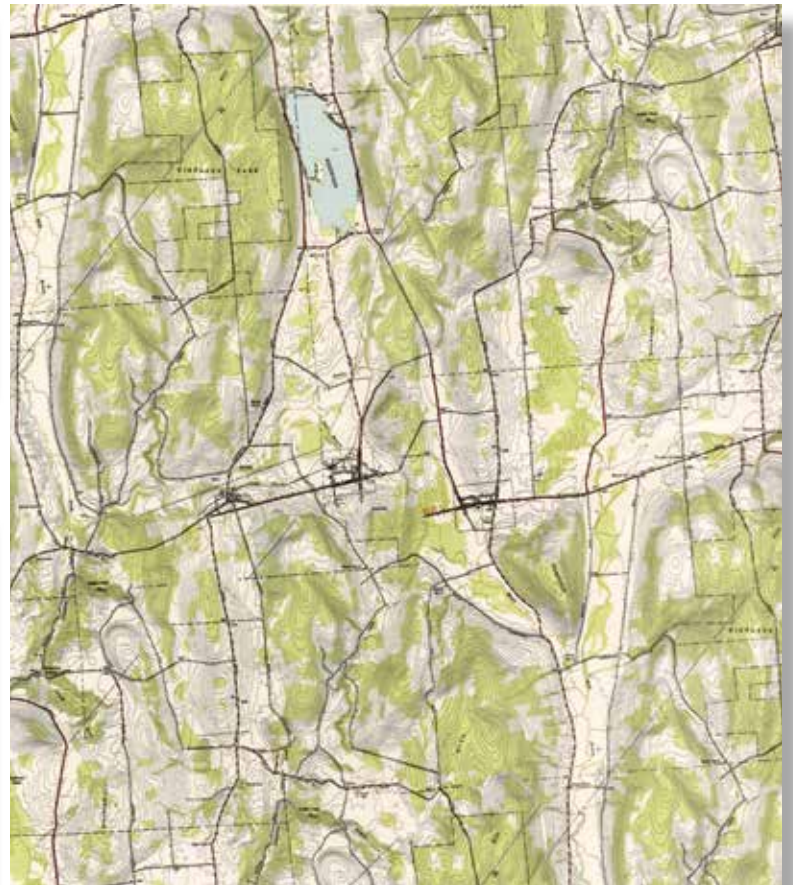
№ 26100 11\*  
Earth



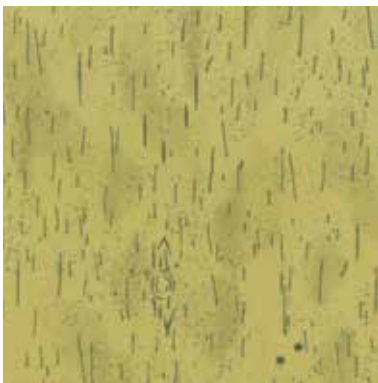
№ 26101 18  
Meadow Green



№ 26104 13  
Meadow Green



№ 26101 17\*  
Dew Green



№ 26106 14  
Dew Green

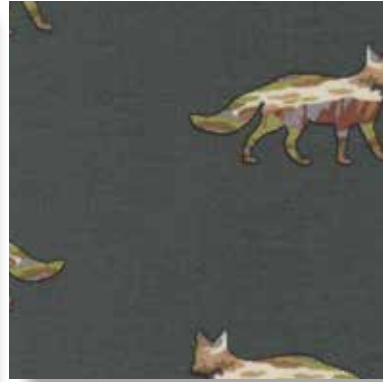


№ 26102 14\*  
Dew Green

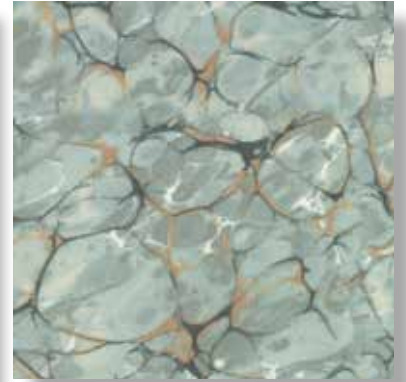




**No 26102 16\***  
**Reservoir Blue**



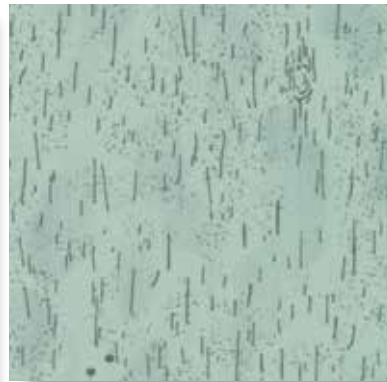
**No 26103 18\***  
**Pine Green**



**No 26104 12\***  
**Peak Blue**



**No 26103 12**  
**Stone Grey**



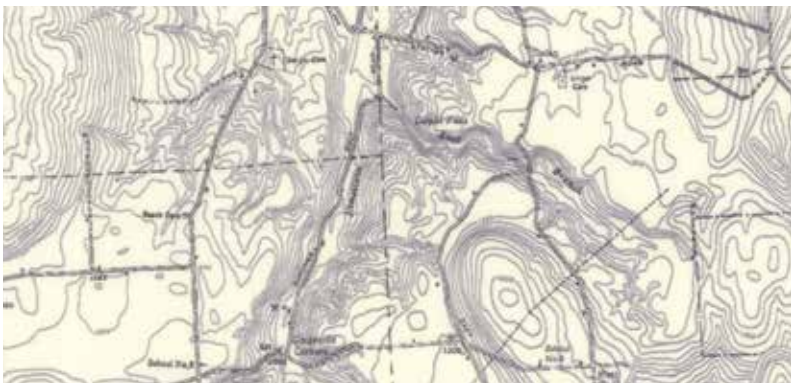
**No 26106 21**  
**Peak Blue**



**No 26045 35\***  
**Peak Blue**



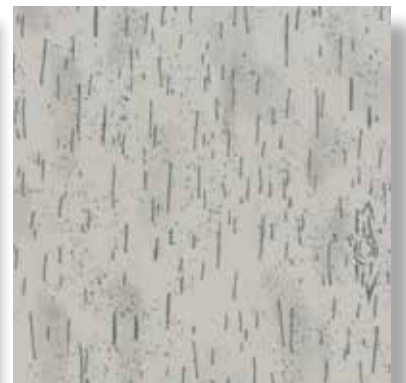
**No 26103 14**  
**Peak Blue**



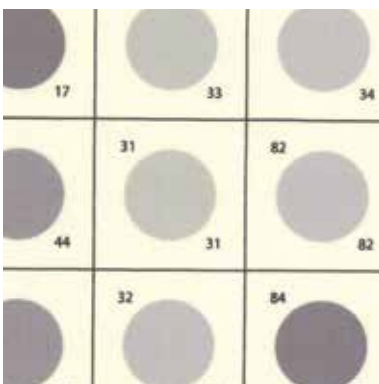
**No 26101 20**  
**Stone Grey**



**No 26102 20**  
**Stone Grey**



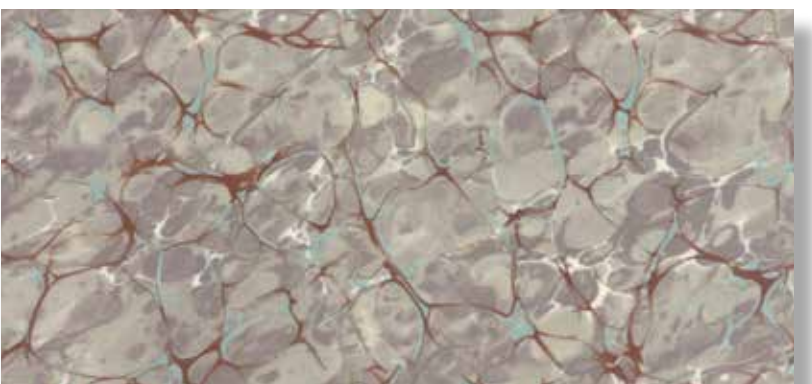
**No 26106 12\***  
**Stone Grey**



**No 26095 18\***  
**Stone Grey**

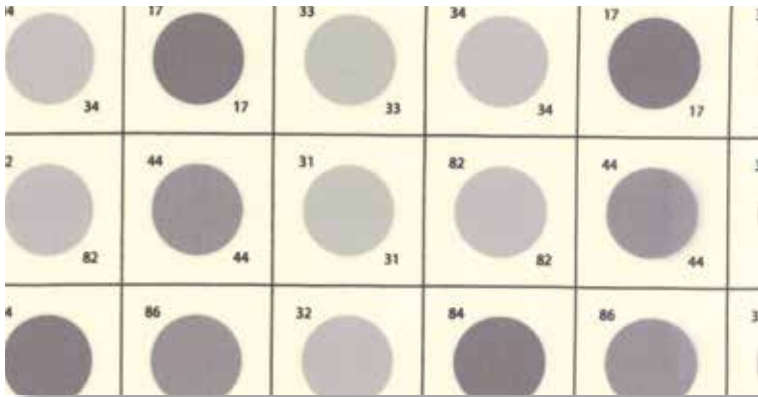


**No 26106 15**  
**Slate Grey**



**No 26104 11**  
**Stone Grey**



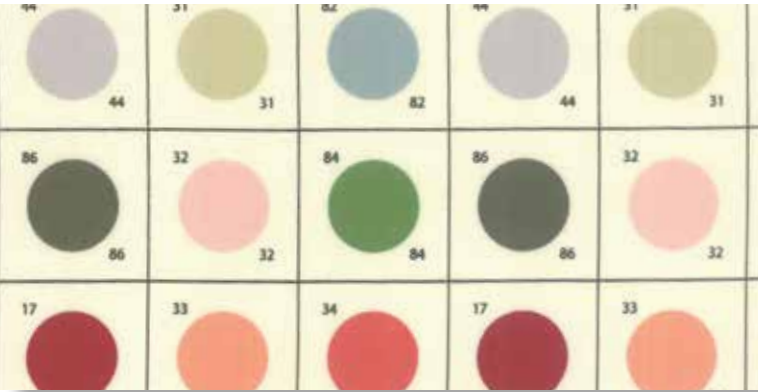


No 11114 18  
Stone Grey 108"



No 11114 17  
Earth 108"

108"  
QUILT  
BACKS



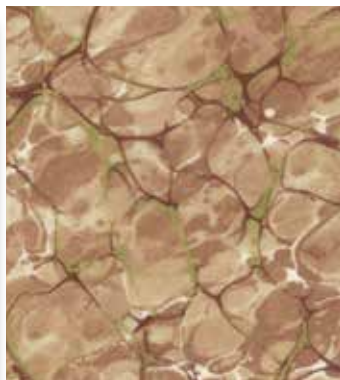
No 11114 11  
Multi 108"



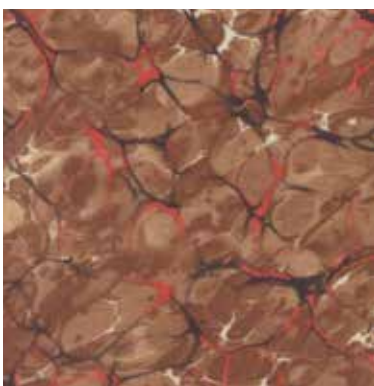
No 11114 15  
Pasture Green 108"



No 26103 19\*  
Dark Brown



No 26104 16  
Gravel



No 26104 15\*  
Earth



Quilt Pattern  
No KIT26100  
Alpine Kit  
Size: 58.5" x 58.5"  
Lumberjack is Digital Printing

26100

Asst.  
15

Asst.  
10

Low Cal  
10

AB

JR

LC

MC

PP

KIT

•32 Prints    •4 Quilt Backs    •100% Premium Cotton  
JR's, LC's, MC's and PP's do not include 26100 and 26095.  
JR's, LC's, MC's and PP's include two each of 26104, 26106 and 26102 12 & 15.

Delivery: May, 2016