

# Milestones



Milestones is a celebration of my 20 years designing fabric for Moda.

It has truly been an adventure from debuting my first collection, Stitches on the Oregon Trail at Fall Quilt Market in 2000, to introducing Milestones, my 63rd collection at Spring Market in Kansas City.

My signature color palette and distinctive vintage prints are present, and they mix beautifully with Kansas Troubles Favorites III in an anniversary Block-of-the-Month I've titled "20 Years of Kansas Troubles Quilters. The king-size quilt chronicles my evolution as a fabric and quilt designer over the past two decades. Each block represents a year of my journey, and two blocks will be revealed each month of the 12-month series. Join me as I reminisce about the joyful pride and creative challenges that have made designing fabric for Moda the best job I didn't know I always wanted.

*Celebrate the moments between the milestones.*

## Kansas Troubles Quilters

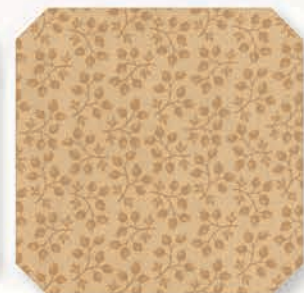
TAN



Field of Dreams - 9610 11 \*



Balance - 9615 11



Branching Out - 9613 21



Hope Blooms - 9612 11 \*

TAN



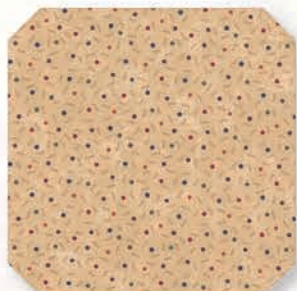
Autumn Years - 9618 11



Woven Memories - 9616 11



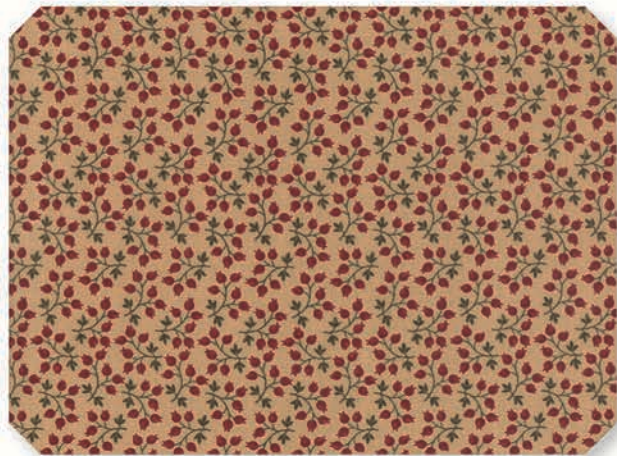
Ups 'N Downs - 9617 21



Ups 'N Downs - 9617 11 \*



Leaves - 9614 11



Branching Out - 9613 11 \*



Balance - 9615 21



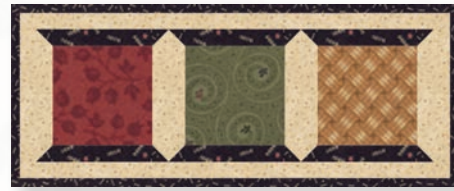
KT 55036 / KT 55036G  
2 STEPS FORWARD  
24" x 44" - PP Friendly



KT 20073 / KT 20073G  
WOVEN DREAMS  
60" x 74" - LC Friendly



KT 20075 / KT 20075G  
**A FEW LITTLE EXTRAS**  
**SPRING BASKET PILLOW - 18" x 18"**



KT 20075 / KT 20075G  
**A FEW LITTLE EXTRAS**  
**3 SPOOLS PINCUSHION - 3" x 7"**

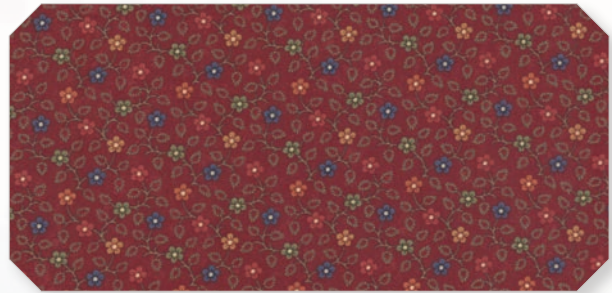


KT 20075 / KT 20075G  
**A FEW LITTLE EXTRAS**  
**FRAMED PILLOW SLEEVE - 12" x 18"**

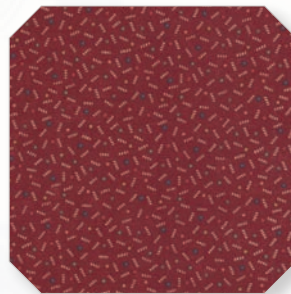
RED



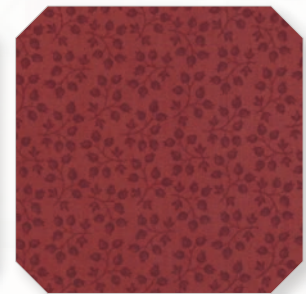
**Field of Dreams - 9610 13 \***



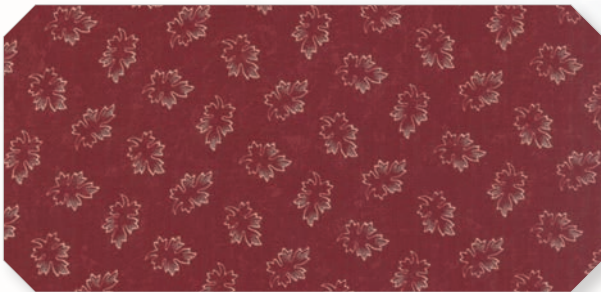
**Hope Blooms - 9612 13**



**Ups 'N Downs - 9617 13**



**Branching Out - 9613 13**



**Leaves - 9614 13 \***



**Autumn Years - 9618 13 \***

— BLACK —  
— ORANGE —



Field of Dreams - 9610 19 \*



Hope Blooms - 9612 19 \*



Ups 'N Downs - 9617 19 \*



Leaves - 9614 17 \*



Woven Memories - 9616 17



Ups 'N Downs - 9617 17

# DESIGNER TRIVIA



## LYNNE HAGMEIER

**First collection** – Stitches on the Oregon Trail in 2001

**First time you saw your name on the selvage** – It was surreal to see “Kansas Troubles Quilters” on the selvage of my first fabric line. I cut off several strips to keep, and I have done the same thing with every line since.

**How many collections have you done?** My 20th Anniversary line, Milestones, for Spring 2019, is #63.

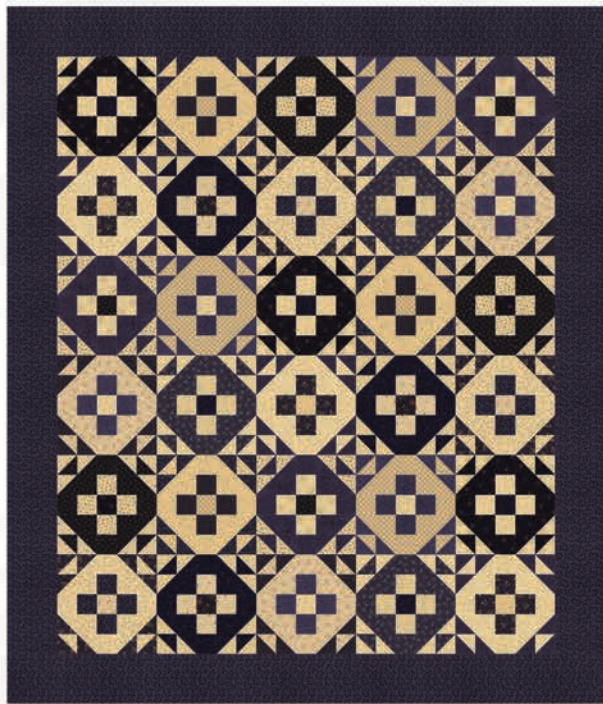
**Favorite pre-cut** – I am still partial to the very first precuts - charm packs. I feel I had a little part in creating them since I begged Moda to have packs of small squares of fabric to show to shop owners at market at a time when fabric was still being shown on paper. We all buy fabric with our fingers, so I thought little packs of fabric would entice the shop owners to buy my fabric line. It must have worked.

**Who taught you to sew** – My Mom and Gramma both had a big impact teaching me to sew and encouraging my love of textiles, buttons and creating.

First Fabric Collection  
**STITCHES ON THE OREGON TRAIL**

ktquilts.com

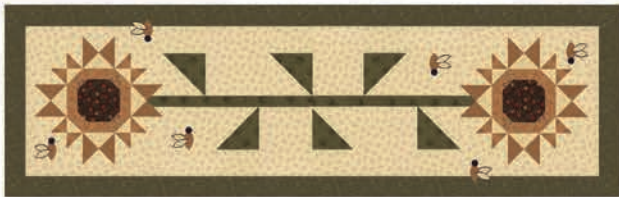




KT 20079 / KT 20079G  
20 PLUS - 60" x 70"



KT 20130 / KT 20130G  
20 YEARS OF KTQ BOM  
118" x 118" - FQ & LC Friendly

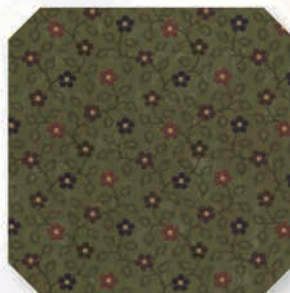


KT 20074 / KT 20074G  
BEE-YOU-TI-FULL RUNNER  
18" x 58" - PP Friendly

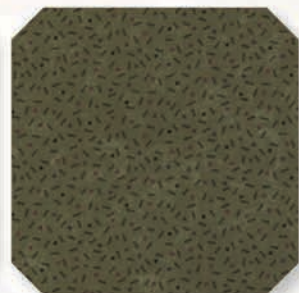
GREEN



Field of Dreams - 9610 15 \*



Hope Blooms - 9612 15



Ups 'N Downs - 9617 15



Branching Out - 9613 15 \* Woven Memories - 9616 15

