

# Betsy Chutchian Helps Quilters Connect Past to Present

Quilt historian, author, and designer Betsy Chutchian's love of quilts began as a child. She remembers running her fingers over the fabrics in the 1930s-era quilt on her grandmother's bed; pointing to different fabrics in the quilt, "my mother would say, 'That was my dress, that was Mother's apron,'" Betsy recalls, "and I realized, there's a connection. There's a history there." Helping quilters find a connection to the past and create their own future heirlooms have been guiding principles in Betsy's quilting and design journey.

## From Past to Present

Betsy learned to sew on her grandmother's treadle machine and made her first quilted project while in high school – quilted placemats pieced from a box of fabric squares bought from the Sears catalog in 1970. In the early 1980s, she started making quilts while pregnant with her daughter, teaching herself from books from



Betsy with her daughter and her grandmother, Irene who taught her to sew on the treadle machine.



Betsy Chutchian with her quilt blocks from the Turn Back Time quilt using Sally's Stitches fabric.

the library. After a while, she began selling quilted items in craft fairs and stitching up shop samples. By the early 1990s, she was working for a local quilt shop teaching quilting classes, and later, as a buyer. In 2002, Betsy purchased the shop where she worked and taught, and one month later was diagnosed with breast cancer. She later sold the shop, but continued to work and teach there. "Breast cancer gave me courage and an incentive to do things I'd been afraid to do before," she says – like submitting proposals for her first solo book, *Gone to Texas*, and a fabric collection. Betsy's earliest collections were released through Blue Hill Fabrics; when they closed, Betsy says that out of all the offers she received to work with other manufacturers, only Moda Fabrics "felt like the right fit." Betsy's first collection with Moda Fabrics, *Eliza's Indigo*, was released in 2015, featuring rich indigo and brown prints carefully reproduced from an antique quilt in Betsy's collection.

## Telling HERstory, not HIStory

Betsy studied history in college, where she became more interested in women's roles in history, saying that what was lacking from history was "what was going on at home." Betsy uses her fabric collections to help tell those stories. And Betsy has a treasure trove of firsthand accounts of life as a woman at the turn of the century in her great-great-grandmother Lizzie's journals. "Lizzie wrote in her journal nearly every day from 1857 until her death in 1882," according to Betsy. "In those journals, I feel a strong connection to her," Betsy says. Many of Lizzie's journal entries are included in Betsy's books, *Gone to Texas* and *Lizzie's Legacy*.

## An Antique Sampler Made New

Sally's Stitches is Betsy's 21st collection with Moda, and as with her previous collections, the prints are based on those



Betsy's great-great-grandmother Lizzie and a page from her journals and other family photos.



One of Betsy's cats, Harrison, approving the blocks in a Sally's Stitches quilt.

used in an antique quilt in Betsy's collection. "I found the Sally's Stitches quilt at a booth at Quilt Market in 2023," Betsy recalls. She was instantly struck by the vibrant colors and extensive applique in the quilt. "People always think antique quilts are just brown," she frets, noting that 19th century quilts very often featured brightly colored fabrics, like the cheddar and buttery yellows, turkey reds, Prussian blue, and poison greens of the Sally's Stitches quilt.

"I love that it's not perfect," Betsy declares, referencing the antique quilt's inconsistent block sizes and the "quirkiness" of the appliques, "but all together, it's a beautiful quilt." It's also the perfect quilt for a block-of-the-month program, which Betsy will be releasing exclusively through Moda. The Turn Back Time Sampler and block-of-the-month program will be supported with video tutorials with Betsy as she teaches quilters all the techniques needed to make this incredible quilt. Be sure to speak to your sales professional for more information on this exciting program!







# Sally's Stitches 1840-1860

## Betsy Chutchian

Finding a fabulous 1840-1860's sampler quilt was unbelievably exciting for me! I loved its oversized and quirky pieced and appliquéd blocks, all in terrific fabrics, and still in great condition – what an amazing find! With careful study, we have reproduced a number of prints from the sampler – and from another quilt in my collection from the same time period – to honor the makers and the vibrant colors of that era. Sally's Story will be revealed as the block-of-the-month program unfolds. I do hope you join me as we Turn Back Time and reimagine Sally and her sampler's journey.



Betsy's antique quilt that inspired the Sally's Stitches fabric collection.

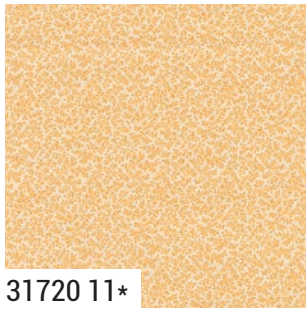




*Sally's Stitches 1840-1860* Betsy Chutchian



31721 11



31720 11\*



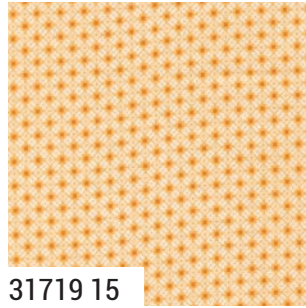
31710 11\*



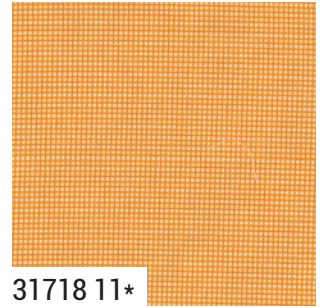
31715 11



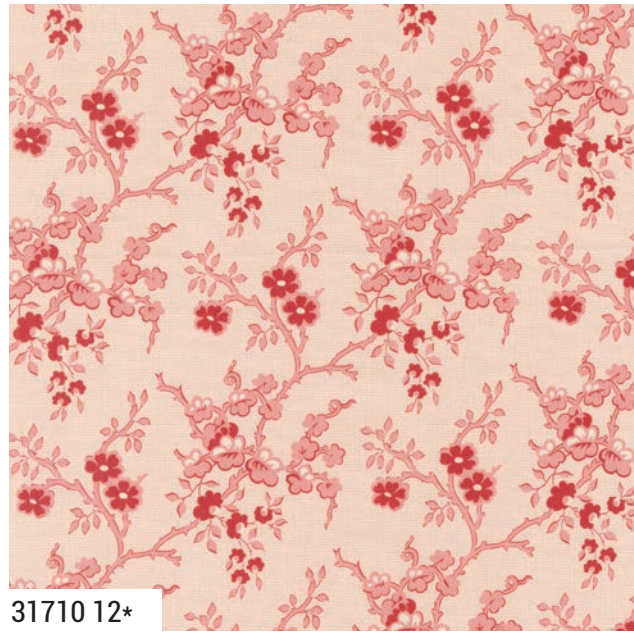
31712 11



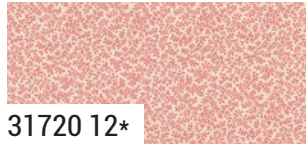
31719 15



31718 11\*



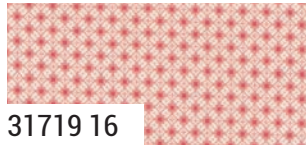
31710 12\*



31720 12\*



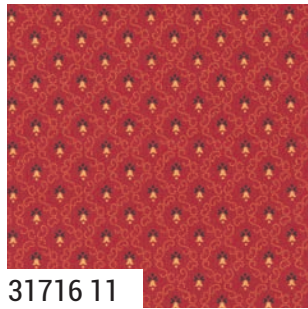
31715 12\*



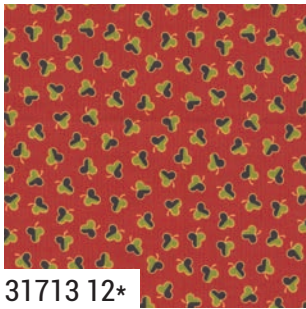
31719 16



31712 12\*



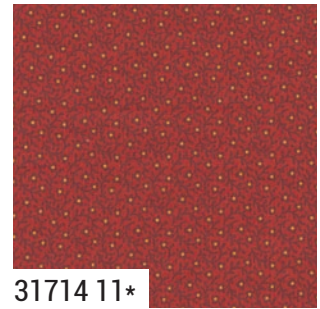
31716 11



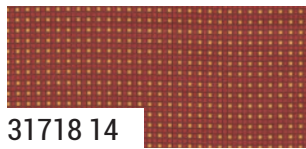
31713 12\*



31717 11\*



31714 11\*



31718 14

9900 182 PORCELAIN

9900 318 AFTERNOON

9900 421 HONEY

9900 120 BETTY'S PINK

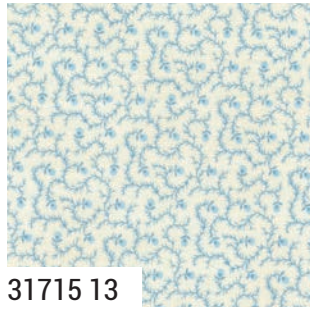
9900 423 SUMAC

Bella Solid Coordinates

*moda* AUGUST DELIVERY



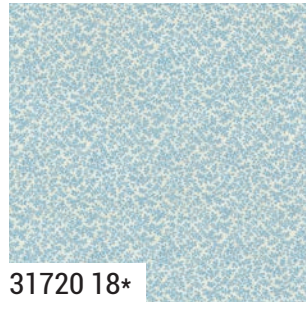
# Sally's Stitches 1840-1860 Betsy Chutchian



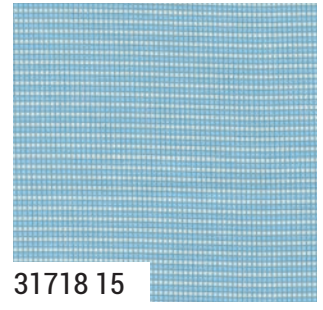
31715 13



31716 14\*



31720 18\*



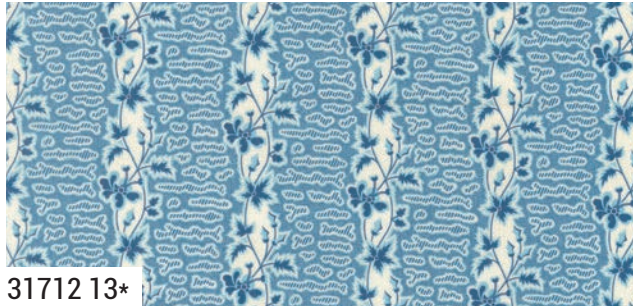
31718 15



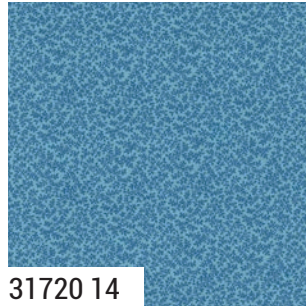
31710 13\*



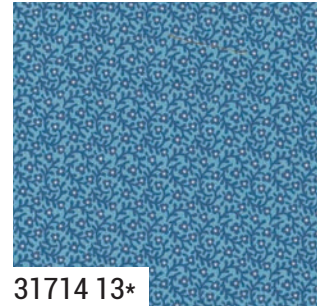
31711 13\*



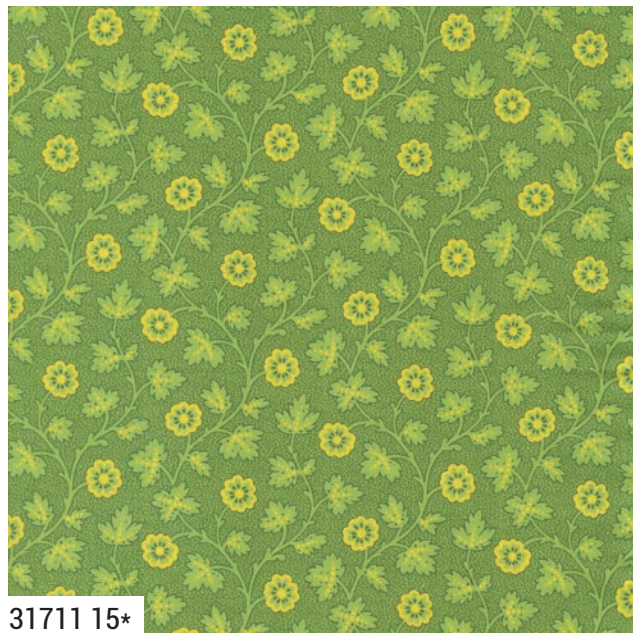
31712 13\*



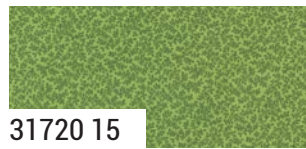
31720 14



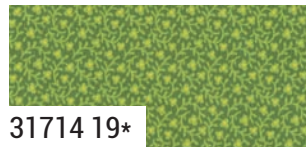
31714 13\*



31711 15\*



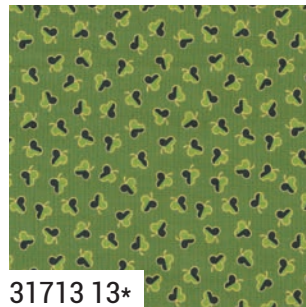
31720 15



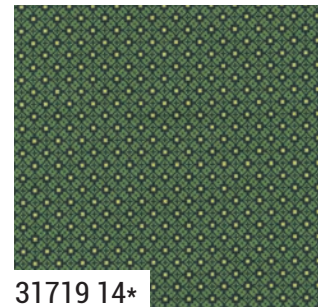
31714 19\*



31717 12



31713 13\*



31719 14\*

31710

Asst.  
15

Asst.  
10

Low Cal  
10

AB

JR

LC

MC

PP

AUGUST DELIVERY

•32 Prints •100% Premium Cotton

AB includes all 32 skus. JRs, LCs, MCs & PPs include 32 skus with two each of 31710 & 31720.

Assortments and precuts do not include Bella Solid Coordinates.

9900 136 SUMMER SKY

9900 461 DUTCH BLUE

9900 192 LEAF

9900 234 EVERGREEN

Bella Solid Coordinates



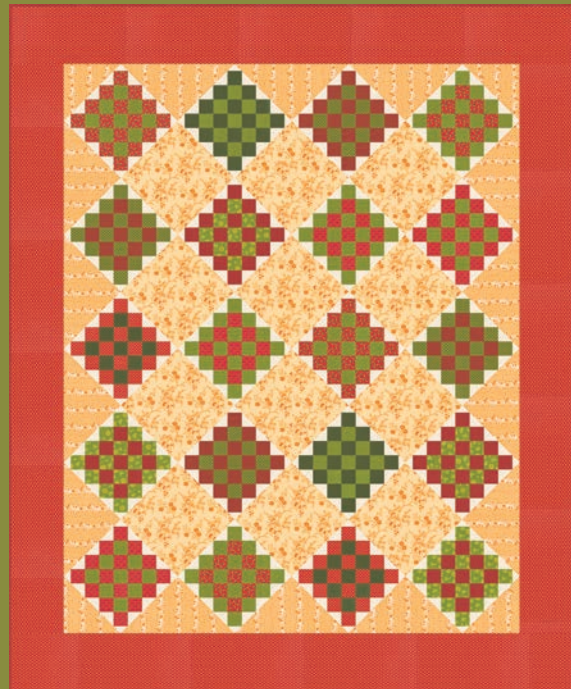
*Sally's Stitches 1840-1860* Betsy Chutchian



BCD 2101 Turn Back Time 81" x 81"  
Sampler quilt features every print in the low cal.



Summer Version



Christmas Version

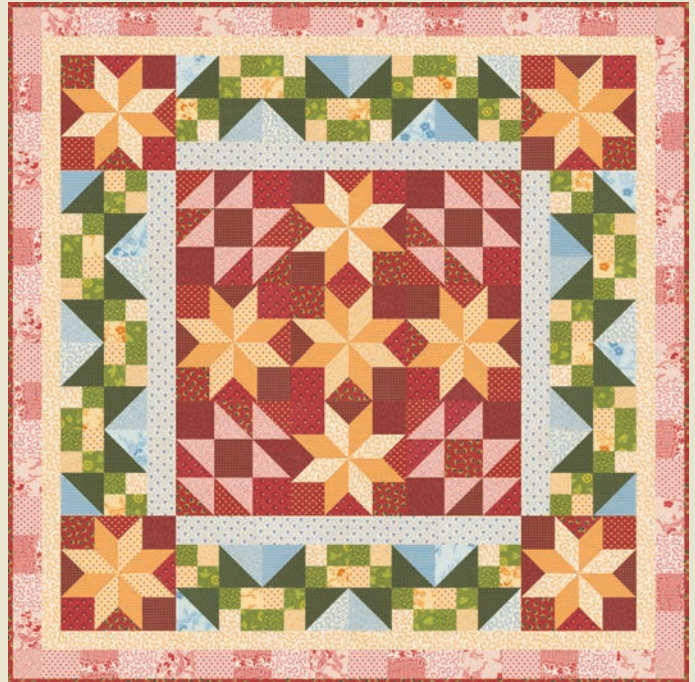
BCD 1203 Countryside 60" x 72"



*Sally's Stitches 1840-1860* Betsy Chutchian



PS31710 Sally's Dishes 15" x 18"



BCD 2102 Sewing Circle 35" x 35"

MTIN31710 Betsy Chutchian's Sally's Stitches Tin



Mini Medallion 2 22" x 22"

Only available with purchase of Collector Series Tin

*Collect  
Them All!*

## Moda Collector Series Tins

We are thrilled to announce our new Moda Collector Series program featuring our fabric designers. Each tin will include:

- Custom artwork
- An exclusive precut and pattern
- A mini Piece catalog highlighting the designer
- A mini charm pack of the fabric collection
- A few other exclusive goodies such as zipper pulls, notebooks, needle minders, notepads, stickers, patches, and more!