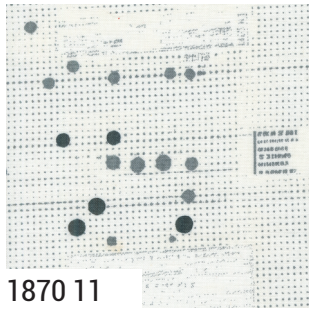


STILL MORE PAPER ZEN CHIC



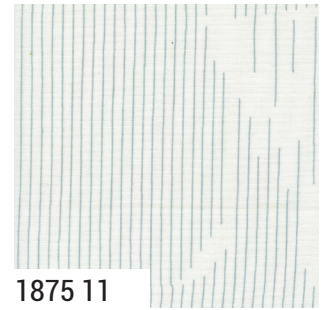
1870 11



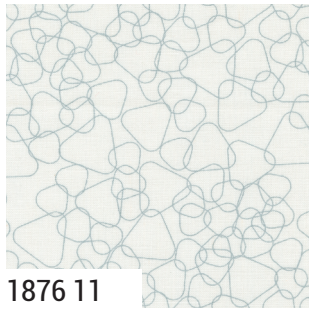
1872 11



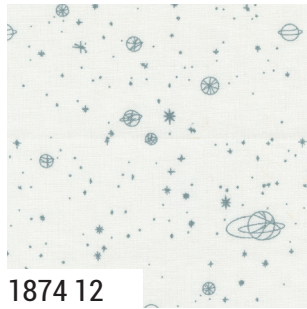
1873 11



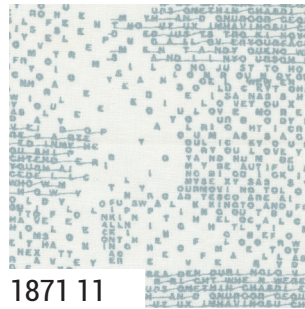
1875 11



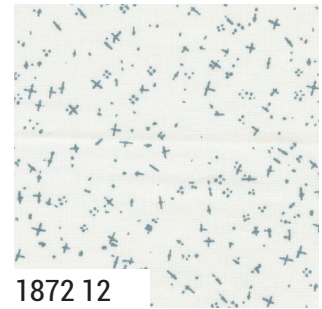
1876 11



1874 12



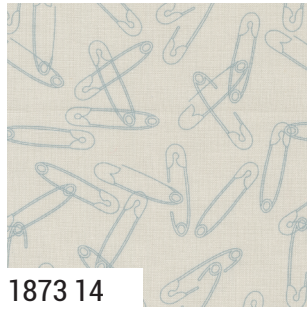
1871 11



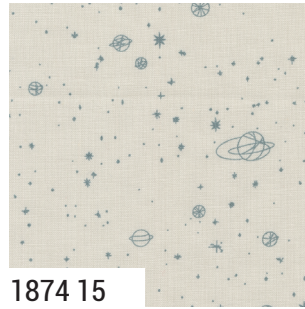
1872 12



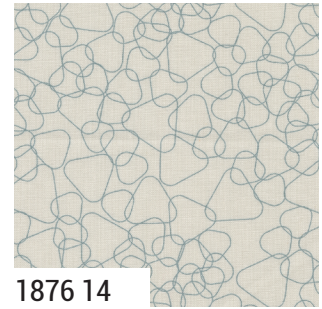
1871 13



1873 14



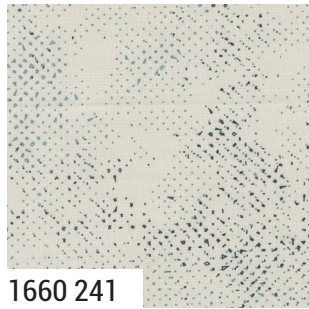
1874 15



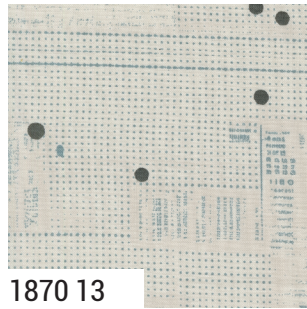
1876 14



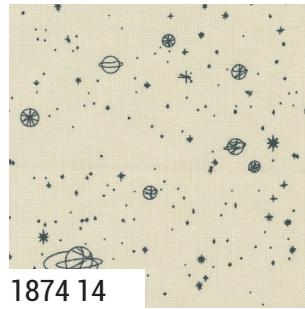
1875 13



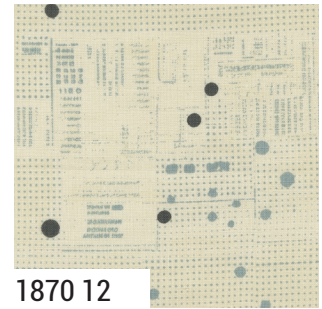
1660 241



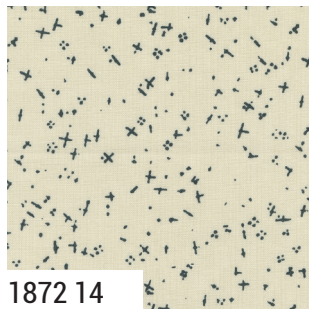
1870 13



1874 14



1870 12



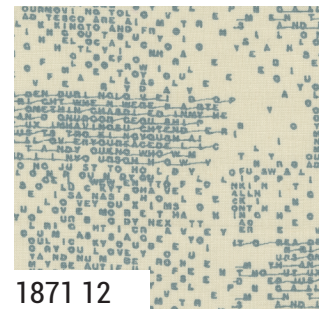
1872 14



1875 12



1873 13



1871 12



1876 12

1870

Asst. 15

Asst. 10

AB

JR

LC

MC

PP

NOVEMBER DELIVERY

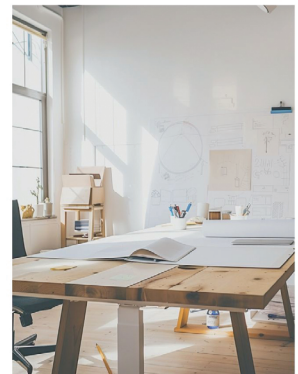
•22 Prints •100% Premium Cotton

ABs include all 22 skus. JRs, LCs, MCs & PPs include 22 skus with two each of 1870, 1871 & 1873 - 1876.

STILL MORE PAPER

ZEN CHIC

Explore **STILL MORE PAPER**, the newest marvel in Zen Chic's Low Volume series. Following **PAPER**, **MORE PAPER**, and **EVEN MORE PAPER**, this collection continues the legacy with timeless, versatile textures. Embracing whites, eggshells, and linens across ten unique patterns, it's an essential for every quilter. **STILL MORE PAPER** perfectly blends with various fabrics, adding a touch of understated elegance and modern sophistication to your quilting projects. A true must-have, it's where charm meets timeless design.



Poppet Pouch pattern by Rosie Taylor Craft can be found on [etsy.com](https://www.etsy.com).

NOVEMBER DELIVERY

moda

projects

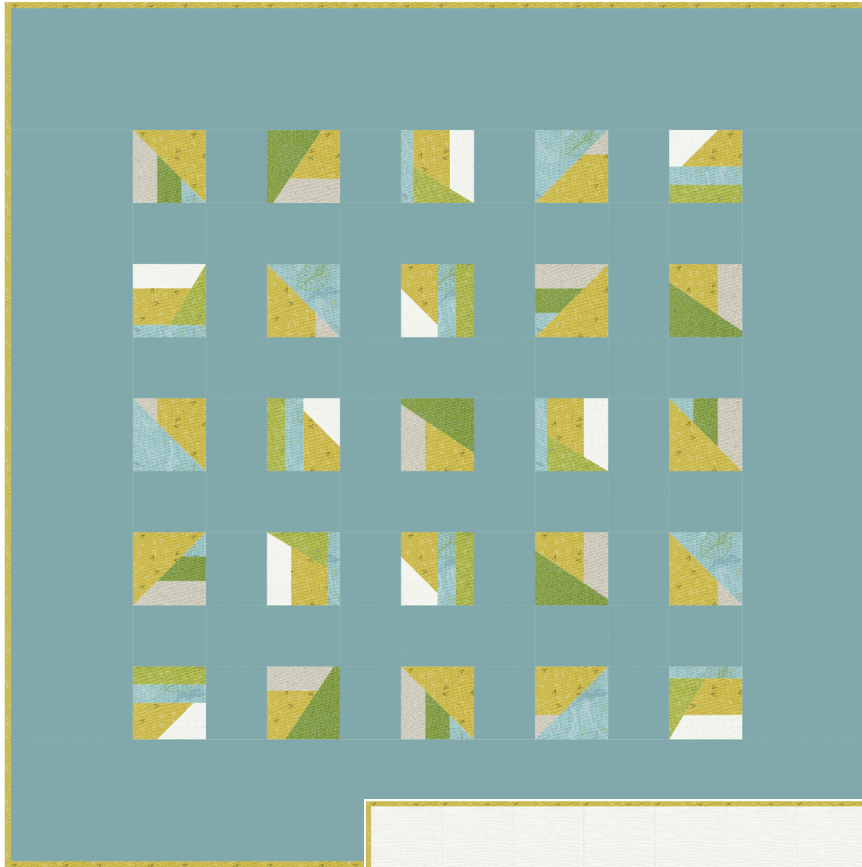


ZC CMQP Cosmo
65" x 69" F8 Friendly
by Zen Chic

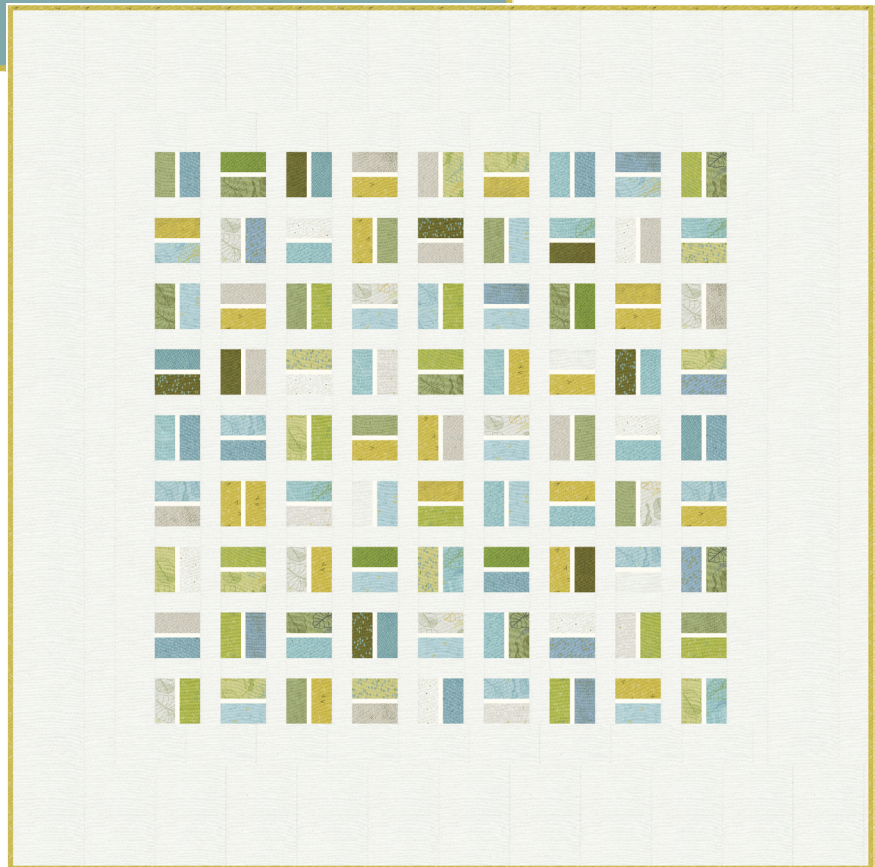


ZC ECQP Eclipse 73" x 73" LC Friendly
by Zen Chic

ZEN CHIC



ZC FRQP Fragment
71" x 71" by Zen Chic



ZC PCQP Play a Card 85" x 85" PP Friendly
by Zen Chic